

## DOUBLE PILOT CHECK VALVE (MODEL: DaPCV-03T)

### APPLICATION

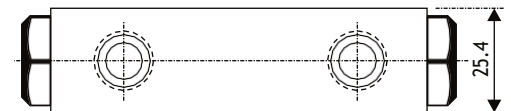
The Double Pilot Check Valve is used to lock a cylinder or part of a circuit and to prevent reverse flow until pilot pressure is applied.

### OPERATION

In a free flow direction through the inlet, the ball is unseated the flow is out of the cylinder port. When the control valve is centered, the load is locked.

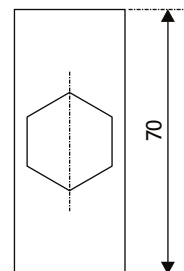
With pressure applied at the pilot piston, the ball is held open, allowing return flow.

This is internally piloted.



### FEATURES

The damped pilot piston reduces damaging shocks and has easily replaceable seats in some models. The directional valve cylinder ports should be connected to the tank in the centre condition.



### SPECIFICATIONS:

Materials:

Body	: Extruded aluminium alloy,
Internal parts	: Hardened steel.
Rated Flow	: 30 LPM
Working Pressure	: 210Kg/cm <sup>2</sup>
Ratio	: 4:1
Weight	: 0.48 Kg

**All ports 3/8" NPT**

HYDAX HYDRAULICS PVT. LTD.

Plot No: 22B, Attibele Industrial Area, Anekal Taluk, Bangalore 562107. India Tel: +91 99160 70034 / 95134 99976 Mob: +91 9731274120  
 Email: info@hydaxindia.com | sales@hydaxindia.com | machines@hydaxindia.com,  
 Website: www.hydaxindia.com | www.hydaxmachines.com